

form

flexibility

details

system

design

sustainability

quality

evolution

expansion

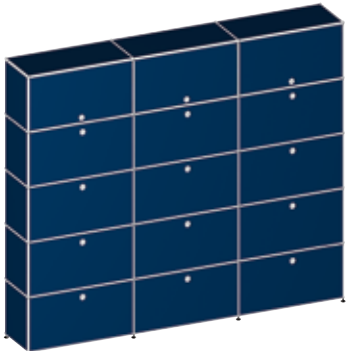
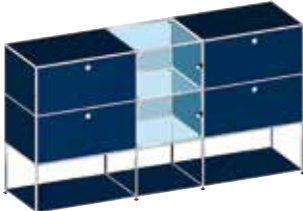
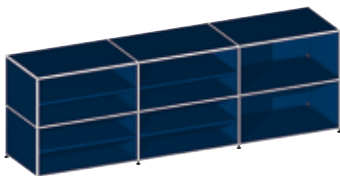
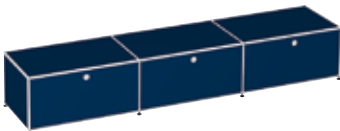
function

USM Haller
System

The basic construction element of USM Modular Furniture Haller is a chrome-plated brass ball joint. Chromed steel tubes connect to the ball to form a stable framework in which the powder-coated metal panels (available in 14 colors) and internal organizational elements are mounted.

Minimalist design with maximum function has made USM Haller a true modern classic, still timeless more than 50 years after it was first introduced. While its basic principles and aesthetics have not changed, accessories are updated continuously to meet current needs and technological advancements, always with the same goal: form and function based on high quality materials and construction precision.





USM Haller

Components

1 Metal panel

Available in various sizes and 14 standard colors. Details see pages 16 and 38.

2 Perforated metal panel

W: 750 / H: 500
W: 500 / H: 500

W: 750 / H: 350
W: 500 / H: 350
W: 395 / H: 350
W: 350 / H: 350

W: 750 / H: 250
W: 500 / H: 250
W: 350 / H: 250

3 Acoustic panel

Perforated metal panel lined with sound-absorbing fabric.

W: 750 / H: 500
W: 500 / H: 500

W: 750 / H: 350
W: 500 / H: 350
W: 395 / H: 350
W: 350 / H: 350

W: 750 / H: 250
W: 500 / H: 250
W: 350 / H: 250

4 Glass Panel

Details see page 14.

5 Countertop inset panel

Available in lacquered glass in 14 standard colors, pearl grey and dark grey plastic laminate.

W: 750 / H: 500
W: 750 / H: 350

W: 500 / H: 500
W: 500 / H: 350

W: 350 / H: 350

6 Glass door

Handle available with or without lock. Hinges in black or chrome finish. Details see page 14.

7 Metal drop down door

Available with pull handle or turning handle with or without locks.*

W: 750 / H: 395
W: 500 / H: 395

W: 750 / H: 350
W: 500 / H: 350
W: 395 / H: 350
W: 350 / H: 350

W: 750 / H: 250
W: 500 / H: 250

W: 750 / H: 175
W: 500 / H: 175

For depths 250, 350 and 500

Available also as acoustic drop down door, lined with sound-absorbing fabric.

W: 750 / H: 350
W: 500 / H: 350
W: 395 / H: 350

W: 750 / H: 250

8 Metal flip up door

Available with pull handle or turning handle with or without locks.*

W: 750 / H: 350
W: 500 / H: 350

For depths 350 and 500

Available also as acoustic flip up door, lined with sound-absorbing fabric.

W: 750 / H: 350
W: 500 / H: 350

9 Metal extension door

Available with pull handle or turning handle with or without locks.*

W: 750 / H: 395
W: 500 / H: 395

W: 750 / H: 350
W: 500 / H: 350
W: 395 / H: 350

W: 750 / H: 250
W: 500 / H: 250

W: 750 / H: 175
W: 500 / H: 175

For depths 350 and 500

Available also as acoustic extension door, lined with sound-absorbing fabric.

W: 750 / H: 350
W: 500 / H: 350

W: 750 / H: 250

10 Drawer

Available with pull handle or turning handle with or without locks.* Closed or open front.

W: 750 / H: 350
W: 500 / H: 350

W: 750 / H: 250
W: 500 / H: 250

W: 750 / H: 175
W: 500 / H: 175

For depths 350 and 500

Available also as acoustic drawer, lined with sound-absorbing fabric.

W: 750 / H: 350
W: 500 / H: 350

W: 750 / H: 250

* Locking handle also available as an electronic closure (countries of availability upon request).

All measurements in mm.



1



2



3



4



5



6



7



8



9



10



USM Haller

Components

1 Metal divider shelf

Height adjustable.

W: 750 / D: 500

W: 750 / D: 350

W: 750 / D: 250

W: 500 / D: 500

W: 500 / D: 350

2 Glass divider shelf

Height adjustable. Mounts to metal side panels only.

W: 750 / D: 500

W: 500 / D: 500

W: 395 / D: 500

W: 750 / D: 350

W: 500 / D: 350

W: 395 / D: 350

W: 350 / D: 350

W: 750 / D: 250

W: 500 / D: 250

3 Metal angled shelf

Lifts up for additional storage space behind.

W: 750 / H: 350

W: 500 / H: 350

4 Metal extension shelf

Pulls out with telescopic mechanism.

W: 750 / D: 500

W: 750 / D: 350

W: 500 / D: 500

W: 500 / D: 350

W: 395 / D: 500

W: 395 / D: 350

5 Extension filing set

Mounted on telescopic mechanism. Available with or without front panels. The inserts available in two heights.

W: 750 / D: 500

W: 395 / D: 500

6 Bookshelf panel

W: 750 / D: 350

W: 750 / D: 250

7 Small drawer

Available with or without lock.*

W: 395 / D: 500 / H: min. 100

8 Drawer A6

Available with or without lock.*

W: 395 / D: 500 / H: min. 175

9 Drawer A5

Available with or without lock.*

W: 395 / D: 500 / H: min. 250

10 Drawer A4

Available with or without lock.*

W: 395 / D: 500 / H: min. 350

* Locking handle also available as an electronic closure (countries of availability upon request).

All measurements in mm.



1



2



3



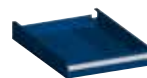
4



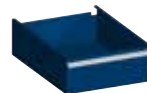
5



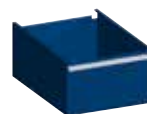
6



7



8



9



10



USM Haller

Accessories

1 USM Inos organizing drawer set

Available in graphite black or light gray. Freestanding or inserted on an extension shelf or in drawers.

2 USM Inos CD tray

Available in graphite black or light gray, freestanding or inserted on an extension shelf or in drawers.

Inserts for 23 CDs
D: 500

Inserts for 14 CDs
D: 350

3 USM Inos DVD tray

Available in graphite black or light gray, freestanding or inserted on an extension shelf or in drawers.

Inserts for 16 DVDs
D: 500

Inserts for 9 DVDs
D: 350

4 USM Inos card-box set

Available in graphite black or light gray, freestanding or inserted on an extension shelf or in drawers.

For drawers A5 or A6
D: 500

For drawers A4, A5 or A6
D: 350

5 USM Inos angled file trays

Available in graphite black or light gray. Inserted on an extension shelf or in drawers.

W: 750 / D: 500

W: 395 / D: 500

W: 750 / D: 350

6 USM hanging file baskets

Inserted on an extension shelf. Letter and legal size filing available.

W: 750 / D: 500

W: 750 / D: 350

7 USM metal box insert

Four-part box inserted in the extension shelves and extension doors with one or two dividers. Available in 14 standard colors. Details see page 69.

W: 750 / D: 500

W: 500 / D: 500

W: 750 / D: 350

W: 500 / D: 350

Door heights 175, 250 and 350

8 USM Inos box set C4

Available in graphite black or light gray. Freestanding or inserted on a shelf.

5 drawer box set open or closed front.

10 drawer box set open or closed front.

9 Bookends for metal panels

Metal magnetic bookend in graphite black and light gray.

10 Bookend for bookshelf panel

Metal sliding bookend in graphite black or light gray to be combined with the bookshelf panel.

11 Perforated metal waste basket

Available in graphite black and light gray.

Ø: 302 / H: 400

Available with a black plastic divider for recyclables.

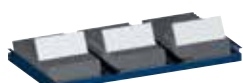
All measurements in mm.



1



2



3



4



5



6



7



8



9



10



11



USM Haller

Glass

1 Glass panel

Corner brackets available in black or chrome.

W: 750 / H: 500

W: 500 / H: 500

W: 395 / H: 500

W: 750 / H: 350

W: 500 / H: 350

W: 395 / H: 350

W: 350 / H: 350

W: 750 / H: 250

W: 500 / H: 250

W: 395 / H: 250

W: 350 / H: 250

W: 250 / H: 250

2 Glass divider shelf

Height adjustable. Mounts to metal side panels only.

W: 750 / D: 350

W: 500 / D: 350

W: 395 / D: 350

W: 350 / D: 350

W: 750 / D: 250

W: 500 / D: 250

3 Lighting

2 watt LED warm white or cold white bulbs. Casing available in black or chrome.

Up to 15 bulbs per transformer.

W: 500

W: 350

W: 250

4 Glass doors

Designed with single-pane safety glass. Handle with or without lock. Hinges available in black or chrome.

W: 750 / H: 500

W: 500 / H: 500

W: 395 / H: 500

W: 750 / H: 350

W: 500 / H: 350

W: 395 / H: 350

W: 350 / H: 350

W: 750 / H: 250

W: 500 / H: 250

W: 395 / H: 250

W: 350 / H: 250

W: 250 / H: 250

All measurements in mm.



1



2



3



4

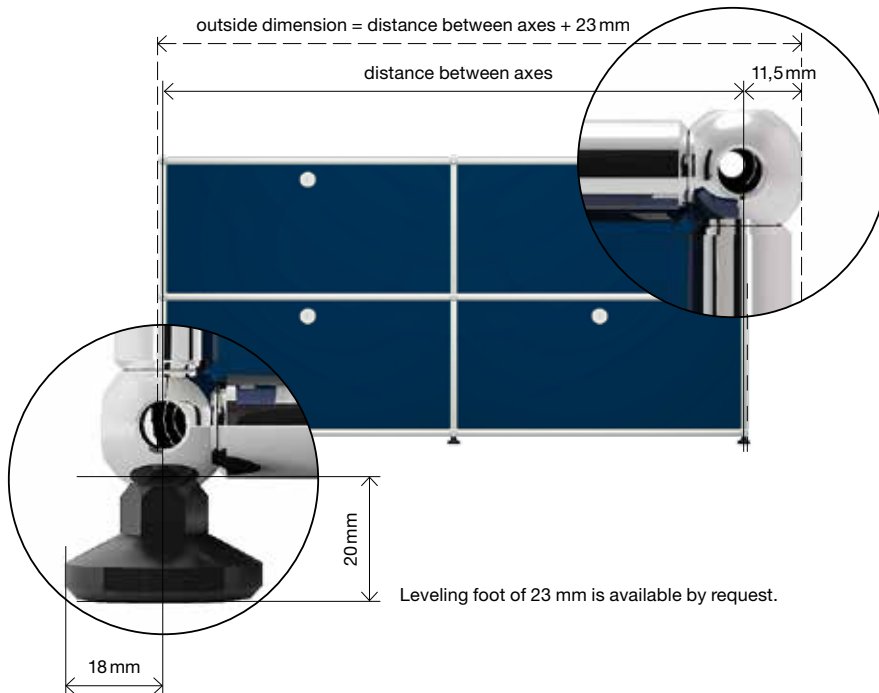




Measurements

USM Haller

The outside dimensions of a USM Haller piece is calculated by adding the support frame to the distance between axes.



The USM Haller system provides a wide variety of elements in standard sizes. Heights, widths and depths are indicated as shown below. All measurements in mm refer to the distance between axes.

H: 100																		
H: 150																		
H: 175																		
H: 200																		
H: 250																		
H: 275																		
H: 350																		
H: 395																		
H: 500																		
H: 750																		
	W: 750	W: 500	W: 395	W: 350	W: 275	W: 250	W: 200	W: 175	W: 150	W: 100								





Colors

USM Haller

Metal



This thin rolled steel plate comes with a polyurethane powder coating that is available in 14 classic colours. The completely solvent-free powder coating is produced in USM's own production facility in Switzerland.



Pure white
RAL 9010



Light gray
RAL 7035



USM matte silver



Mid-gray
RAL 7005



Anthracite
RAL 7016



Graphite black
RAL 9011



Steel blue
RAL 5011



Gentian blue
RAL 5010



USM green



Golden yellow
RAL 1004



Pure orange
RAL 2004



USM ruby red



USM brown



USM beige

USM Inos accessories are available in graphite black and light gray.

Switzerland:
USM U. Schärer Söhne AG
Thunstrasse 55
CH-3110 Münsingen
Phone +41 31 720 72 72
Fax +41 31 720 72 38
info@ch.usm.com

Germany:
USM U. Schärer Söhne GmbH
Postfach 1653
D-77806 Bühl
Phone +49 72 23 80 94 0
Fax +49 72 23 80 94 199
info@de.usm.com

France:
USM U. Schärer Fils SA
Paris Showroom
23 Rue de Bourgogne
F-75007 Paris
Phone +33 1 53 59 30 30
Fax +33 1 53 59 30 39
info@fr.usm.com

USA:
USM U. Schaerer Sons Inc.
New York Showroom
28 – 30 Greene Street
New York, NY 10013
Phone +1 212 371 1230
Fax +1 212 371 1251
info@us.usm.com

Japan:
USM U. Schaerer Sons K.K.
Tokyo Showroom
Marunouchi MY PLAZA 1 · 2F
2-1-1 Marunouchi, Chiyoda-ku
Tokyo 100-0005
Phone +81 3 5220 2221
Fax +81 3 5220 2277
info@jp.usm.com

All other countries
contact USM Switzerland.